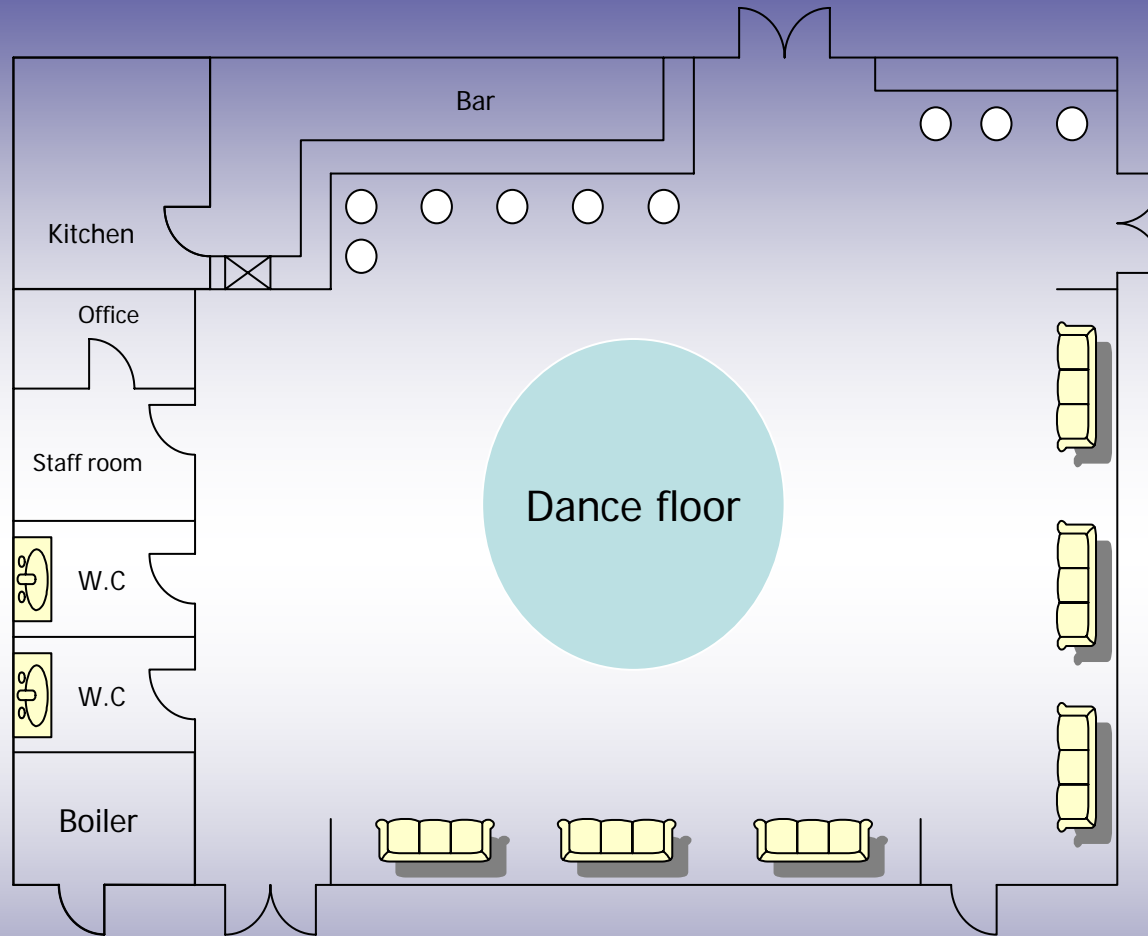


# Humberside Fire & Rescue Service

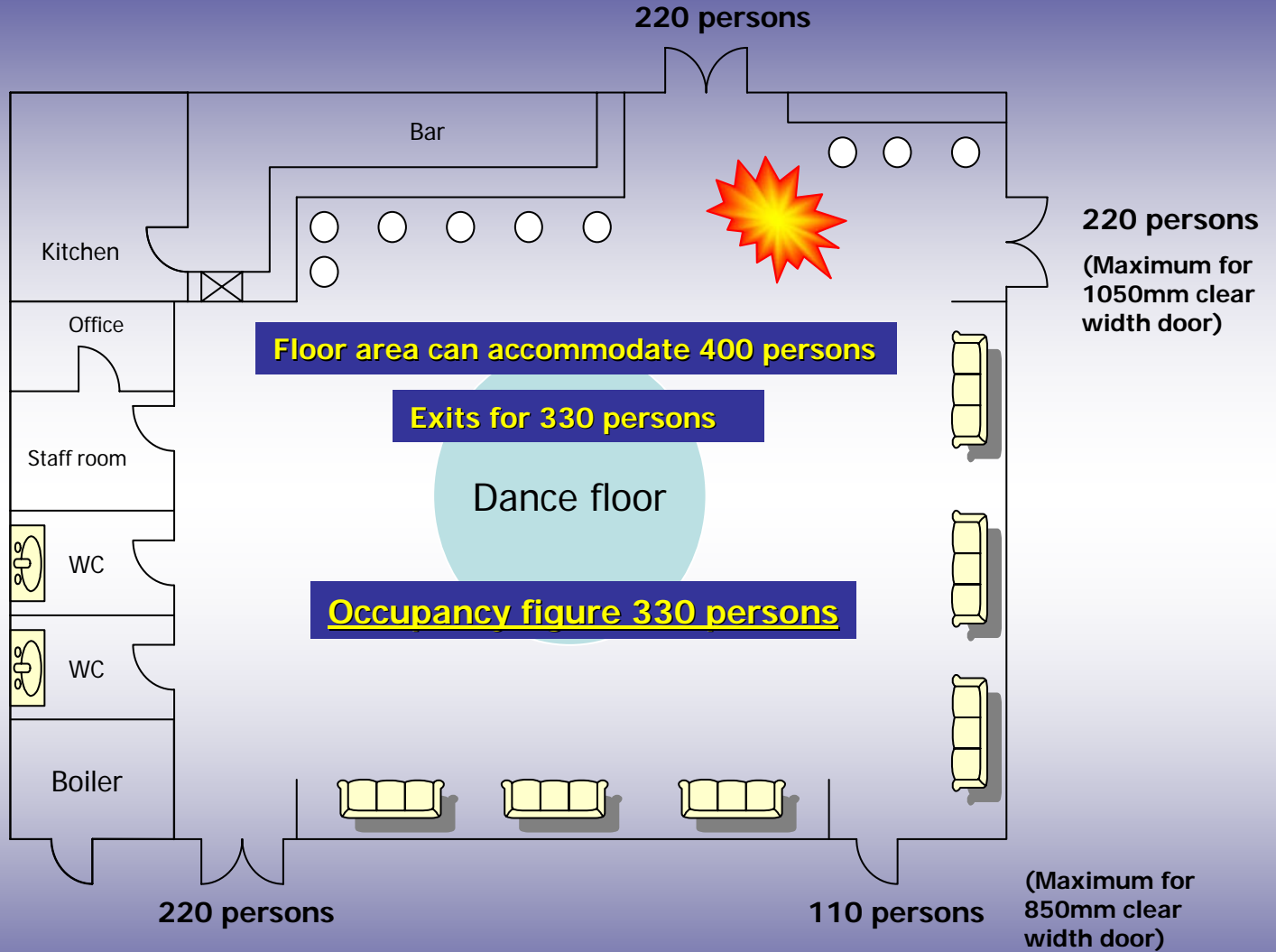
Fire Safety in Licensed Premises

# Licensed Premises (worked example )



Maximum potential occupancy = (Net floor area - dance floor (m<sup>2</sup>)) ÷ Relevant floor space factor(s)  
i.e., standing  $105 \div 0.3 = 350$ , fixed seating  $50 \div 1.0 = 50$ ,  $350 + 50 = \mathbf{400 \text{ persons total}}$

# Exits and Occupancy Figures



Potential occupancy (floor area) = 400

Potential exit capacity (3 x 220+ 1 x 110) = 770

minus largest exit(s) lost to fire (2 x 220) = 440 (See notes page for details)

Final occupancy figure (1 x 220 + 1 x 110) = 330






Notes:

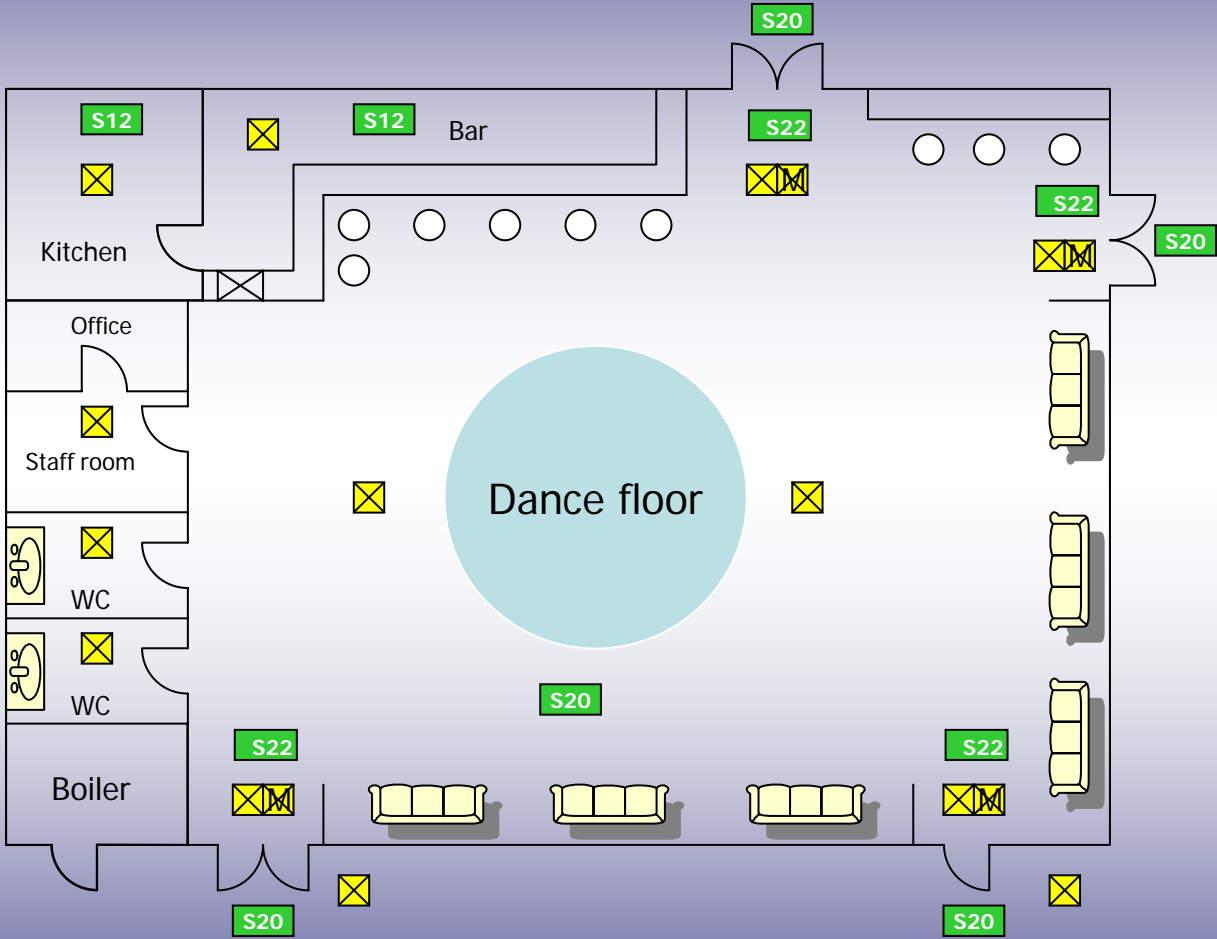
# Possible Means of Escape Occupancy

**Limiting factors include: -**

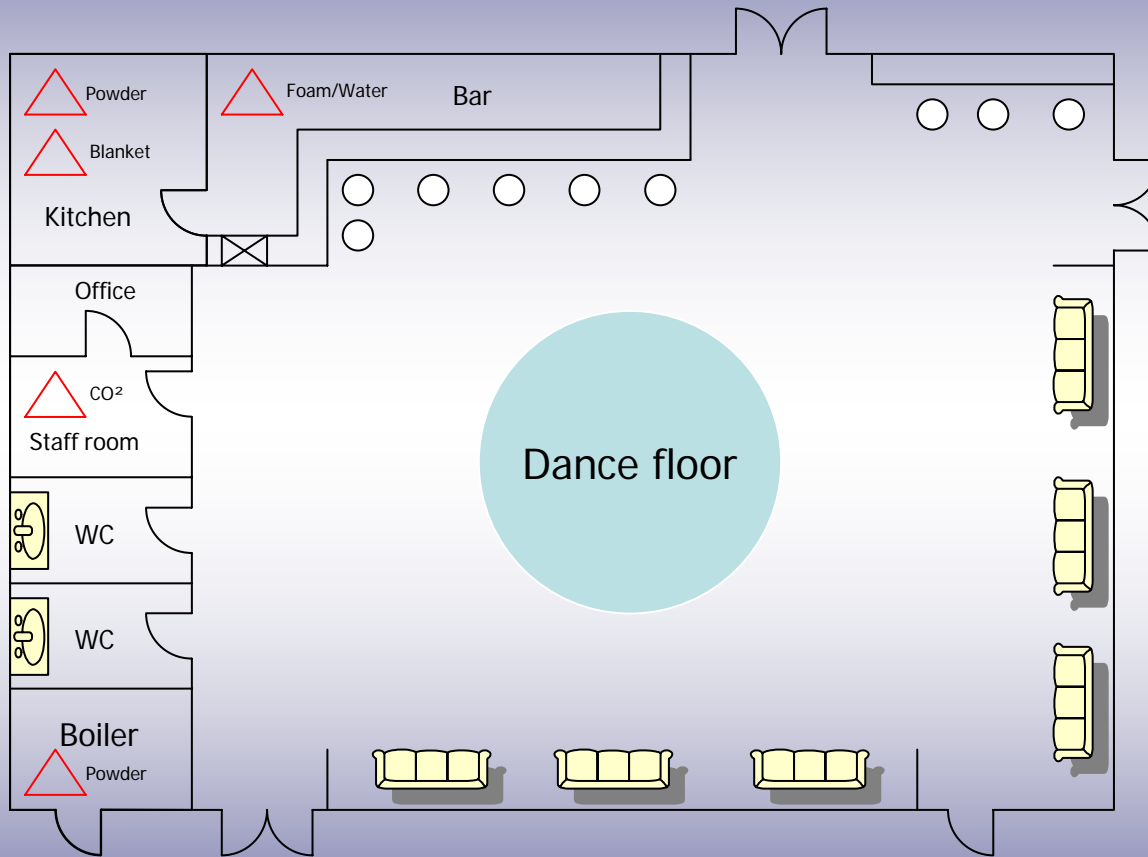
- 1. Largest exit counted as being 'lost to fire'.**
- 2. Exits normally counted as one if less than 45° apart from all parts of the room or not separated by fire resisting construction.**
- 3. Inward opening door - 60 persons.**
- 4. Single door from room / premises - 60 persons.**

# Escape Lighting & Notices

-  Non-maintained Escape lighting
-  Maintained escape lighting
-  Fire exit notice
-  Fire exit keep clear notice
-  Fire action notice

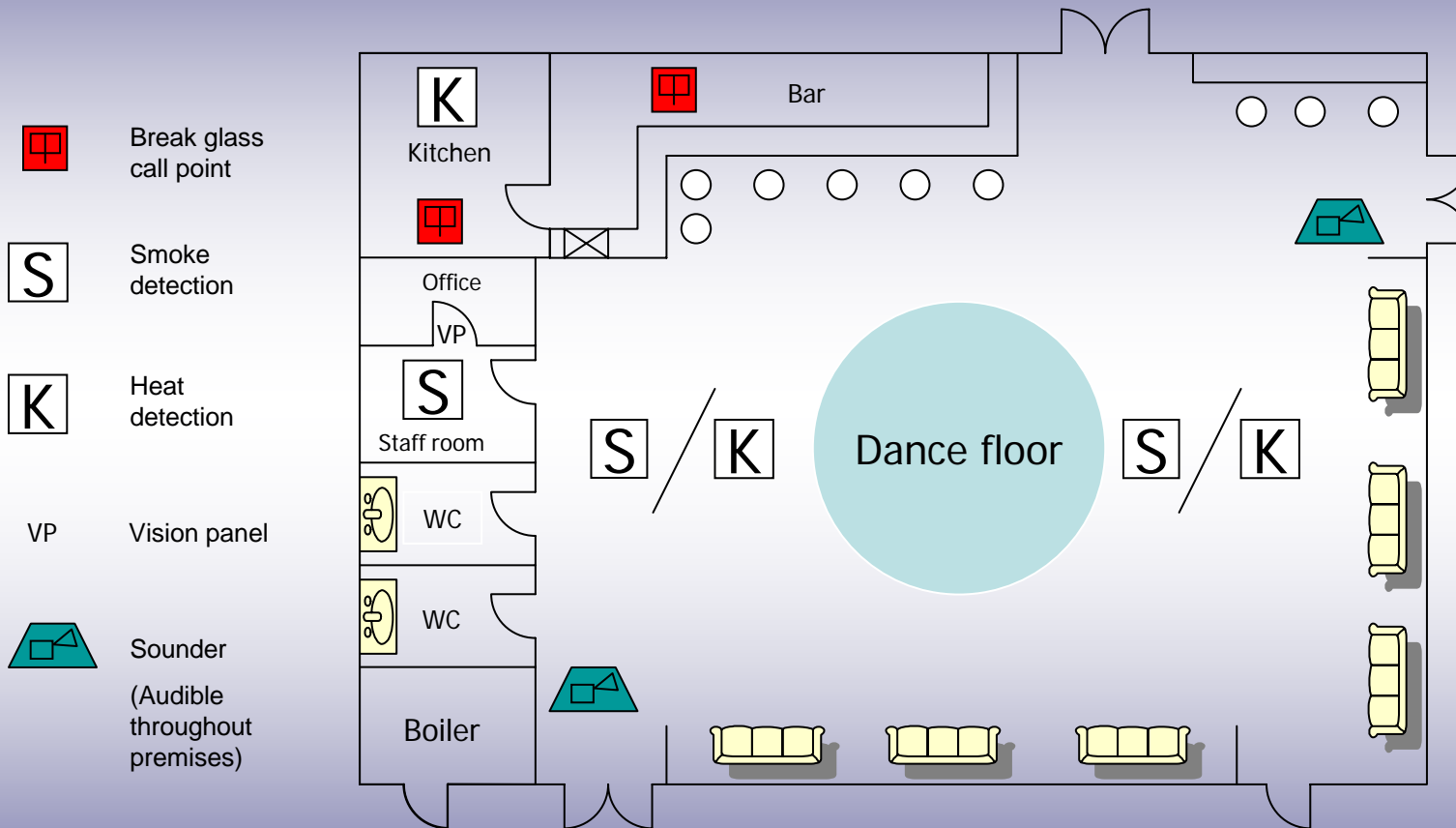


# Extinguishers



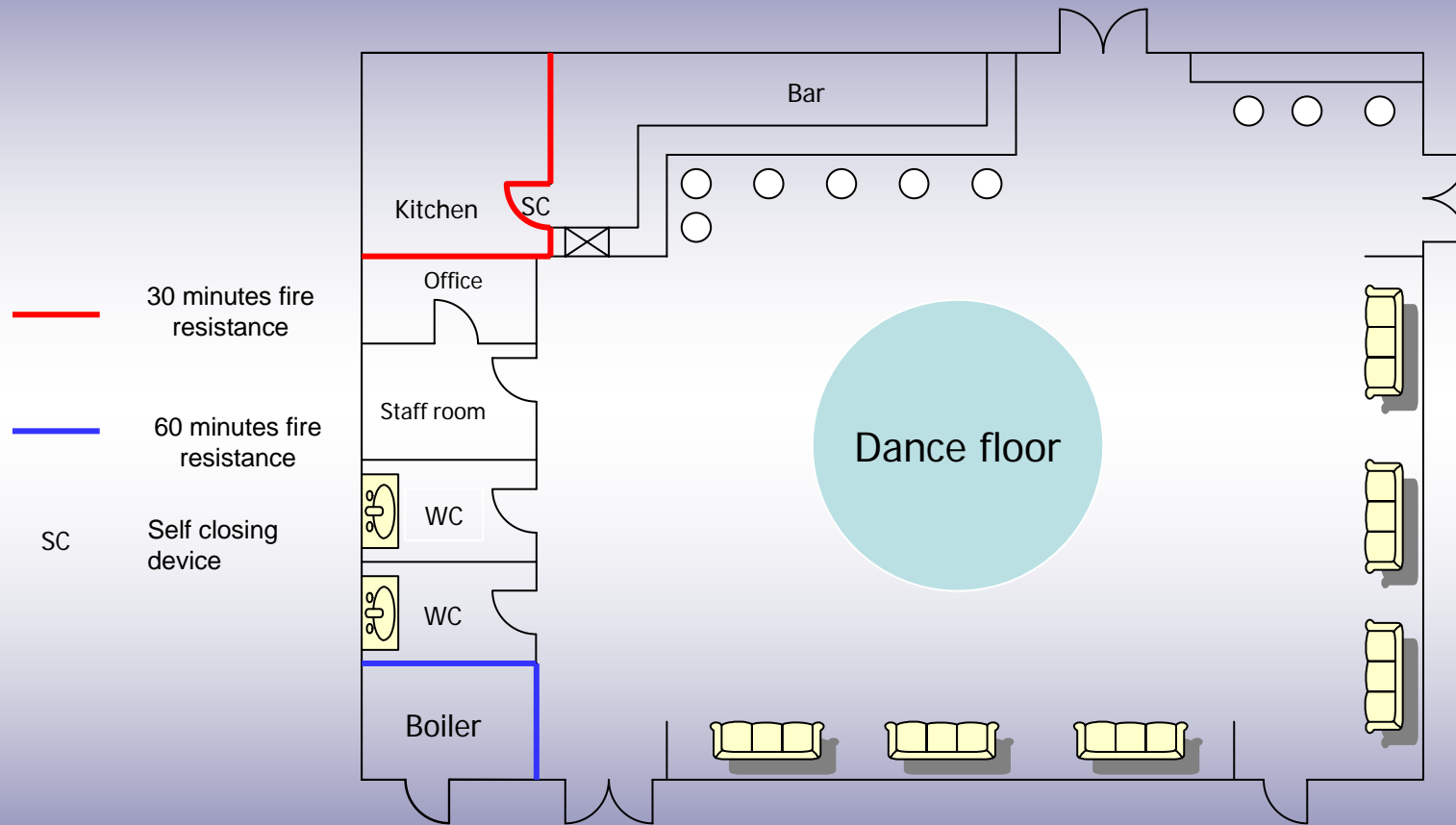
Portable Fire Extinguisher

# Fire Alarm










Automatic fire detection as appropriate - subject to risk level and Fire Risk Assessment findings

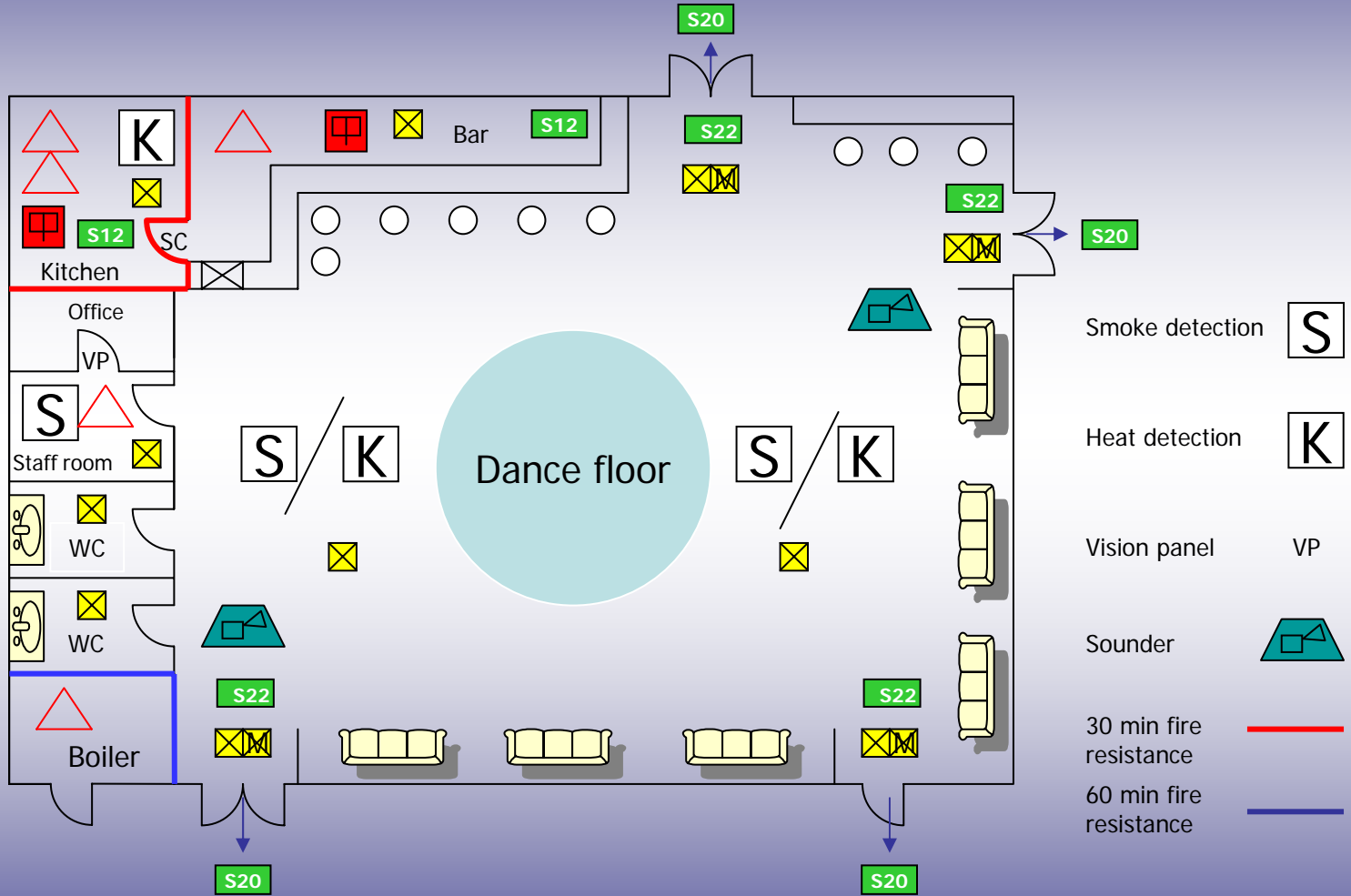
# Fire Resistance



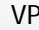





Higher Risk Areas

# Fire Precautions Plan

-  Non-maintained escape lighting
-  Maintained escape lighting
-  Fire exit notice
-  Fire exit keep clear notice
-  Fire action notice
-  Portable fire extinguisher
-  Break glass call point



-  Smoke detection S
-  Heat detection K
-  Vision panel VP
-  Sounder
-  30 min fire resistance
-  60 min fire resistance